



Winsted[®]
Control Room Consoles

SEATING

S O L U T I O N S



HIGH PERFORMANCE CHAIRS

HIGH BACK CHAIR

Winsted[®]
Control Room Consoles

11745 - 24/7 HIGH BACK CHAIR

RATED WEIGHT CAPACITY:

300 lbs.

WEIGHT:

46 lbs.

CARTON DIMENSIONS: 10.8 cubic feet

SEAT DIMENSIONS:

Seat Width: 19"

Seat Depth: 16" – 18 ¼"

Seat Height - Floor: 17" – 21 ¼"

BACK DIMENSIONS:

18-1/2"

OVERALL DIMENSIONS: Maximum Chair Width: 26 ½"

Maximum Chair Depth: 25"

Chair Height (short cylinder): 37 ¾" – 40"

COUNTRY OF ORIGIN:

USA

CASTERS - CARPET:

Monochromatic, black color only, open dual wheel-60 mm diameter. Made from nylon 6/6 with a steel wheel axle and socket stem

BASE:

Made from injection-molded glass filled Nylon, 26" dia. The base incorporates five legs

PNEUMATIC PUMP:

Gas cylinder mechanism

TILT LOCK:

Features 5 settings to lock the back in various positions of recline. The tilt lock knob is conveniently located on the left side of the chair under the seat

SEAT CUSHION:

The seat cushion is molded cellular urethane foam; foam density is 2.8 lbs. per Cu. Ft. (ILD is 41 lbs.). The minimum seat cushion thickness is 2 ¾"

SEAT SUPPORT:

The seat is supported by formed plywood .70" thick. The plywood is constructed of 7 layers of willow and hard maple

SEAT COVER:

Fabric upholstery with top stitch seams is securely fastened to the seat support with staples

Arms standard with chair.



11745

SECURITY PILOT CHAIR

Winsted[®]
Control Room Consoles

11750 - 24/7 SECURITY PILOT CHAIR

RATED WEIGHT

CAPACITY: 250 lbs.

WEIGHT 2 CARTONS: 23 lbs./40 lbs.

CARTON DIMENSIONS: 26"W x 26"D x 20"H & 24"W x 8"D x 45"H

SEAT DIMENSIONS: 20-1/2"W x 20"D x 5"Thick

BACK DIMENSIONS: 22"W x 37"H x 4"Thick

OVERALL DIMENSIONS: 24-1/2" to 28-1/2"W x 52" - 62-1/2"H x 22"D

COUNTRY OF ORIGIN: USA

CASTERS - CARPET: High-Impact Dual Wheel Hooded Casters

5-STAR BASE: Nylon fiberglass composite

PNEUMATIC PUMP: Gas cylinder mechanism

MECHANISM: Northfield 4-paddle

FEATURES: Independent Seat Tilt, Lock-in Tilt, Front Tilt, Independent back Tilt, Lock in a desired angle or free float, pneumatic height adjustment, ratchet back height adjustment, ratchet height adjustable headrest

SEAT INTERIOR: 9-ply plywood with double riveted T-nuts
2 layers 3" High density foam
Meets CA 117 Firecode

BACK INTERIOR: 9-ply plywood
2 layers 3" High density foam
Meets CA 117 Firecode

BACK BAR: 0.8mm thick Steel Heavy-Duty Back bar

ARMS: Durable Poly Scooped Arm Pad, push button adjustability up/down; knob adjustability in/out, mounted on 0.4mm thick heavy gauge steel upright

RACHET HEADREST: Steel bar with nylon and fiberglass composite form covered with foam and fabric/leather

Shown with
optional scoop
arms **11769**



11750

UNIVERSAL TASK CHAIR

Winsted[®]
Control Room Consoles

11760 - UNIVERSAL TASK CHAIR

RATED WEIGHT

CAPACITY: 250 lbs.

WEIGHT: 58 lbs.

CARTON DIMENSIONS: 26"W x 26"D x 20"H

SEAT DIMENSIONS: 20-1/2"W x 20"D x 5"Thick

BACK DIMENSIONS: 20-1/2"W x 20"H x 4"Thick

OVERALL DIMENSIONS: 40-1/2" - 47"H x 24-1/2" - 28-1/2"W x 22"D

COUNTRY OF ORIGIN: USA

CASTERS - CARPET: High-Impact Dual Wheel Hooded Casters

5-STAR BASE: Nylon fiberglass composite

PNEUMATIC PUMP: Gas cylinder mechanism

MECHANISM: Northfield 4-paddle

FEATURES: Independent Seat Tilt, Lock-in Tilt, Front Tilt, Independent back Tilt, Lock in a desired angle or free float, pneumatic height adjustment, Height adjustable back with knob adjustment

SEAT INTERIOR: 9-ply plywood with double riveted T-nuts
2 layers 3" High density foam
Meets CA 117 Firecode

BACK INTERIOR: 9-ply plywood
2 layers 3" High density foam
Meets CA 117 Firecode

BACK BAR: 0.8mm thick Steel Heavy-Duty Back bar

ARMS (OPTIONAL): Durable Poly Scooped Arm Pad, push button adjustability up/down; knob adjustability in/out, mounted on 0.4mm thick heavy gauge steel upright

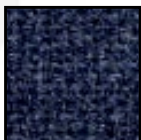
Shown with optional scoop arms **11769**



11760



Red
11762



Blue
11766



Black
11760